


# How to update firmware in bootloader mode

Update the device when it is in bootloader mode.

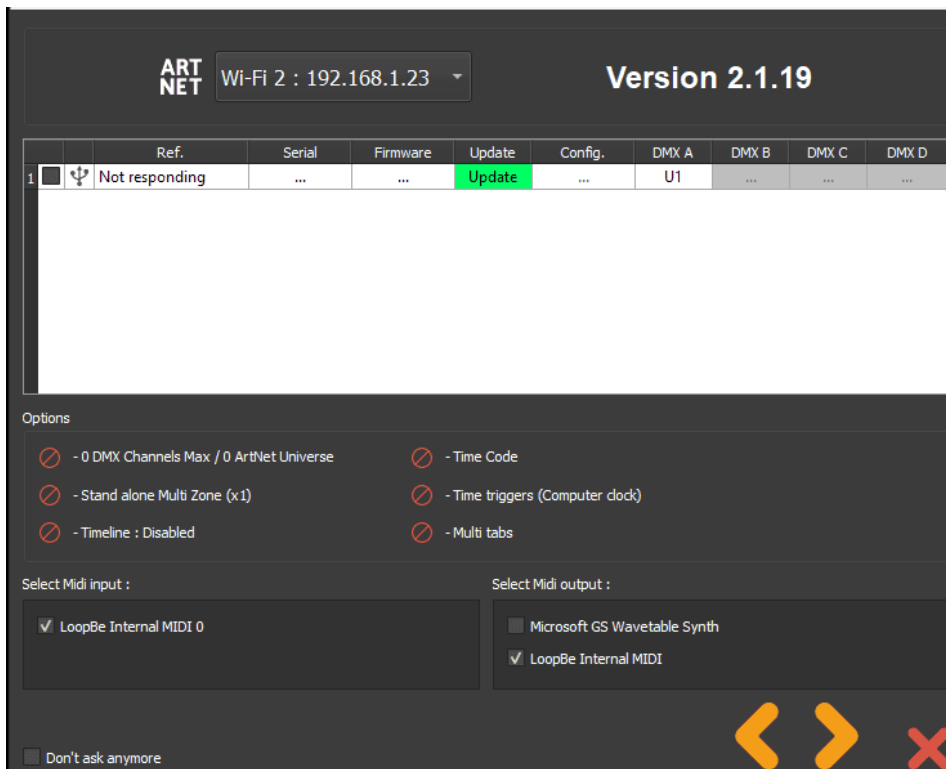
Bootloader mode failure:

- The USB signal LED(s) flash rapidly
- The LED display shows BL  (CQSA/CQSA-E/CQSA-E2/SLIM)
- The device is not detected by the software, which indicates that an update is required

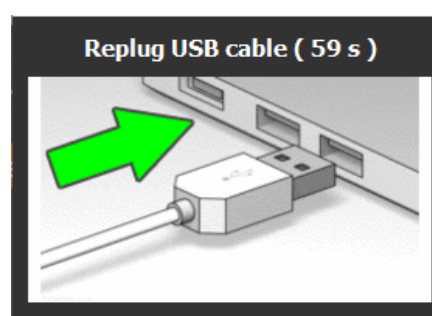
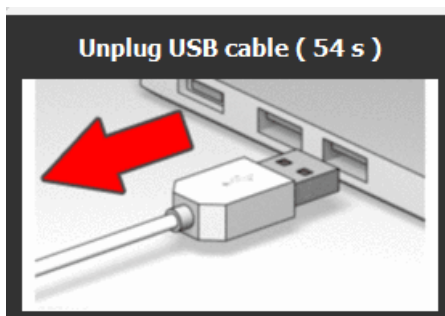
## Update the device via the software opening window

Open the software :

1. Click on "update"

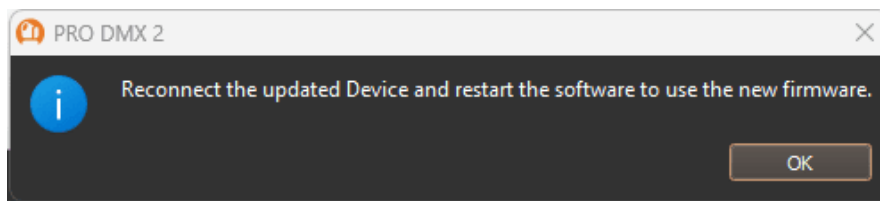


2. Unplug and replug USB cable, wait until the end of the update.



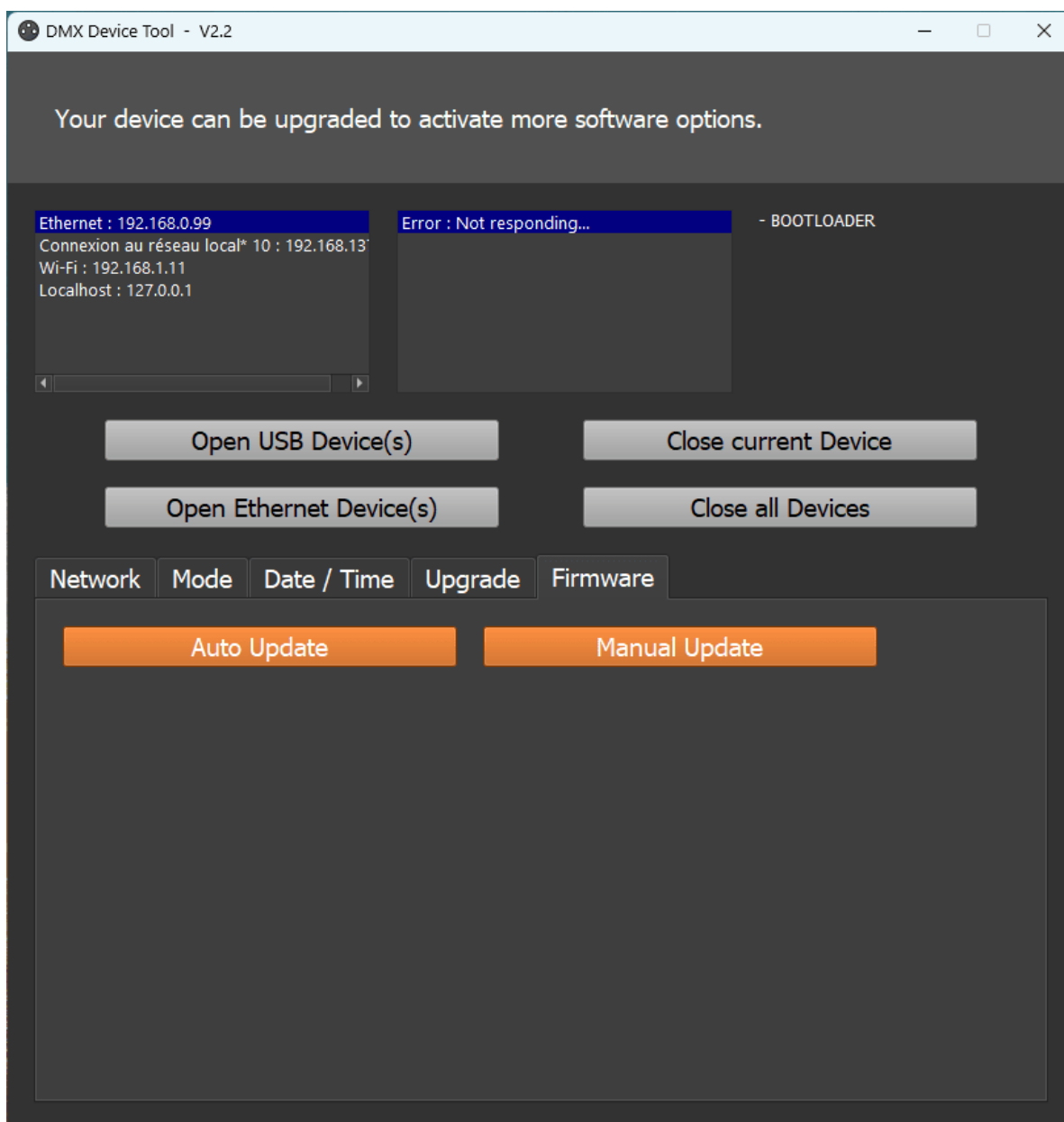
Uploading... (Remaining Bytes: 205280)

3. click "ok" to Restart the software

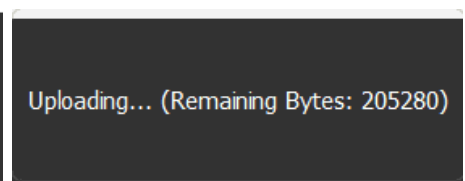
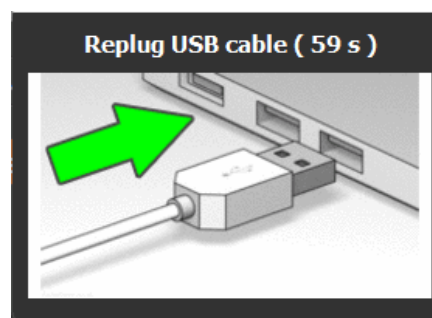
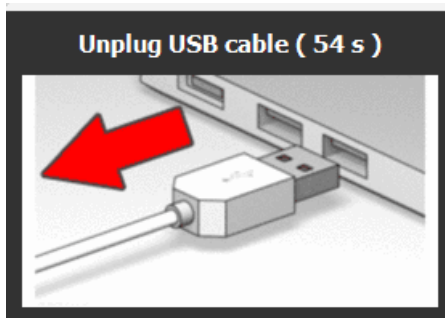


## Update the device via the DeviceTool

1. Connect your device via the USB port
2. Click "Open USB Device"
3. Inside "Firmware" tab, click "Auto Update"



4. Unplug and replug USB cable, wait until the end of the update.



5. Close the DeviceTool and unplug replug one more time the device to start on the new firmware.
6. Then use the device normally